

PLEASE CHECK WWW.MOLEX.COM FOR LATEST PART INFORMATION

**Part Number:** [0039012146](#)  
**Status:** **Active**  
**Overview:** [minifit\\_jr](#)  
**Description:** 4.20mm (.165") Pitch Mini-Fit Jr.™ Plug Housing, Dual Row, with and without Panel Mount Ears, UL 94V-0, Panel Mount, 14 Circuits

**Documents:**

[3D Model](#) [Product Specification PS-5556-001 \(PDF\)](#)  
[Drawing \(PDF\)](#) [RoHS Certificate of Compliance \(PDF\)](#)

**Agency Certification**

CSA	LR19980
TUV	R72081037
UL	E29179

**General**

Product Family	Crimp Housings
Series	<a href="#">5559</a>
Comments	Current = 13A max. per circuit when header is mated to a receptacle loaded with <a href="#">45750</a> series terminals crimped to 16 AWG wire. . See Molex product specification PS-45750-001 for additional current de-rating information.. Not for use with Strain Relief
Overview	<a href="#">minifit_jr</a>
Product Name	Mini-Fit Jr.™

**Physical**

Breakaway	No
Circuits (maximum)	14
Color - Resin	Natural
Flammability	94V-0
Gender	Male
Glow-Wire Compliant	No
Material - Resin	Nylon
Number of Rows	2
Packaging Type	Bag
Panel Mount	Yes
Pitch - Mating Interface (in)	0.165 In
Pitch - Mating Interface (mm)	4.20 mm
Pitch - Term. Interface (in)	0.165 In
Pitch - Term. Interface (mm)	4.20 mm
Polarized to Mating Part	Yes
Stackable	No
Temperature Range - Operating	-40°C to +105°C

**Electrical**

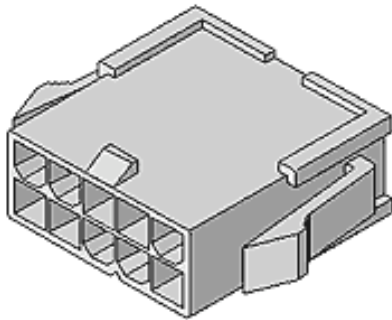
Current - Maximum per Contact	13A
-------------------------------	-----

**Material Info**

Old Part Number	5559-14P-210
-----------------	--------------

**Reference - Drawing Numbers**

Product Specification	PS-5556-001
Sales Drawing	SD-5559-NP



Series

image - Reference only

**EU RoHS**

**ELV and RoHS  
Compliant**  
**REACH SVHC**  
**Contains SVHC: No**  
**Halogen-Free**  
**Status**

**China RoHS**



**Need more information on product  
environmental compliance?**

Email [productcompliance@molex.com](mailto:productcompliance@molex.com)  
For a multiple part number RoHS Certificate of Compliance, [click here](#)

Please visit the [Contact Us](#) section for any non-product compliance questions.

**Search Parts in this Series**

[5559Series](#)

**Mates With**

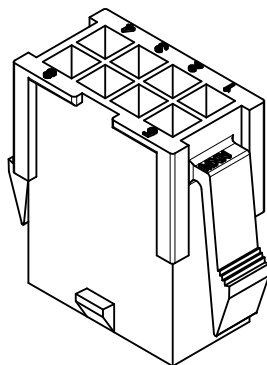
[5557d](#) Receptacle Housing

**Use With**

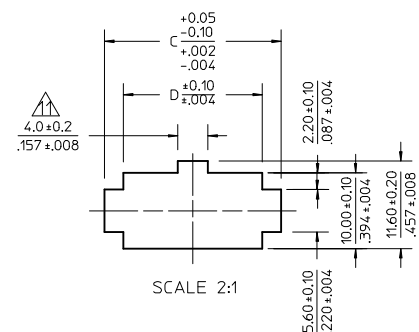
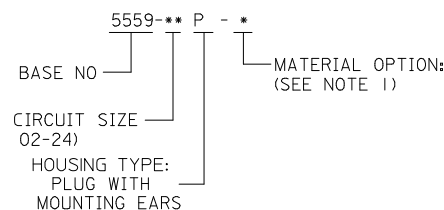
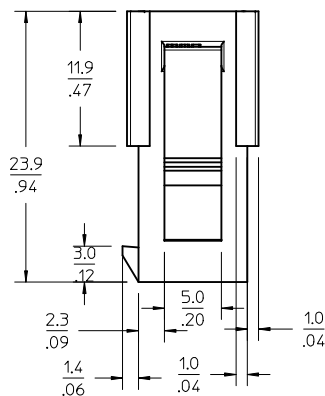
[5558](#) , [44478](#) , [30490](#) , [41995](#)

This document was generated on 05/19/2010

**PLEASE CHECK [WWW.MOLEX.COM](http://WWW.MOLEX.COM) FOR LATEST PART INFORMATION**



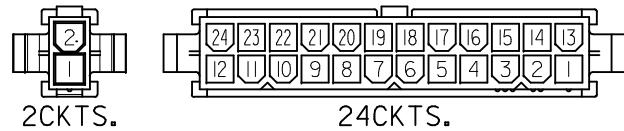
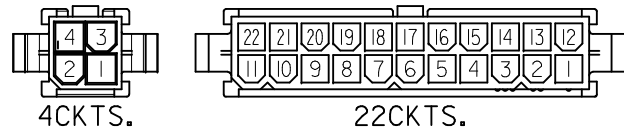
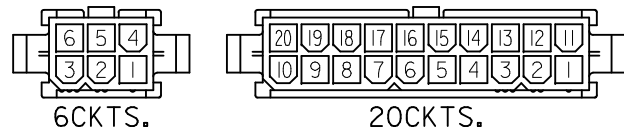
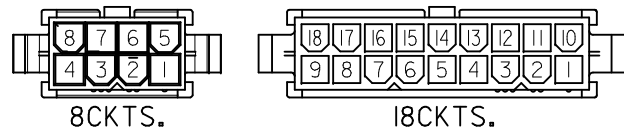
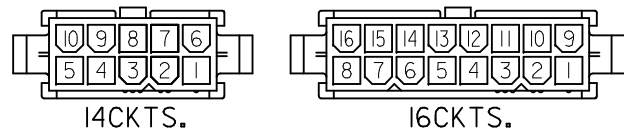
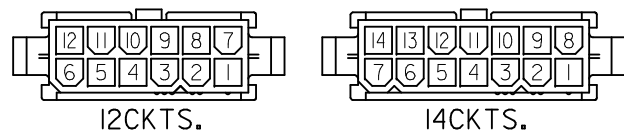
12) PANEL HOLE TO BE PUNCHED OUT IN THE SAME DIRECTION AS INSERTION INTO THE PANEL.



RECOMMENDED PANEL HOLE DIMENSIONS  
(THICKNESS : 0.8-2.0/.032-.079)

52.1/2.051	57.0/2.244	51.6/2.031	46.2/1.819	24
47.9/1.886	52.8/2.019	47.4/1.866	42.0/1.654	22
43.7/1.720	48.6/1.973	43.2/1.701	37.8/1.498	20
39.5/1.555	44.4/1.748	39.0/1.535	33.6/1.323	18
35.3/1.390	40.2/1.583	34.8/1.370	29.4/1.158	16
31.1/1.224	36.0/1.417	30.6/1.205	25.2/0.992	14
26.8/1.055	31.8/1.252	26.4/1.039	21.0/0.827	12
22.6/0.890	27.6/1.087	22.2/0.874	16.8/0.661	10
18.4/0.724	23.4/0.921	18.0/0.709	12.6/0.496	8
14.2/0.559	19.2/0.756	13.8/0.543	8.4/0.331	6
10.0/0.394	15.0/0.591	9.6/0.378	4.2/0.165	4
5.8/0.228	10.8/0.425	5.4/0.213	—	2
D	C	B	A	CRITICAL

ADDED MODEL VIEWS	EC NO: UCP2010-0850	2009/11/09	DESCRIPTION	QUALITY SYMBOLS	GENERAL TOLERANCES (UNLESS SPECIFIED)	DIMENSION STYLE		SCALE	DESIGN UNITS	THIRD ANGLE PROJECTION	
	ECN: JIAGUILAR	2009/11/10				MM/IN	3:1	METRIC			
	CHKD: J.BELL	2009/11/10				DRAWN BY DATE		NEW MINI. FIT CONNECTOR CRIMP PIN HOUSING			
	APPR: F.S.MITH	2009/11/10				H. HIRAMOTO 1988/10/14					
REV					4 PLACES ±.00 ±.00	CHECKED BY DATE		MOLEX MOLEX INCORPORATED			
					3 PLACES ±.00 ±.012	Y. YAMADA 1988/10/21					
					2 PLACES ±.00 ±.016	APPROVED BY DATE		SD-5559-NP			
					1 PLACE ±.00 ±.020	M. ENOMOTO 1988/10/24					
					ANGULAR ± 3 °	MATERIAL NO.		DOCUMENT NO.		SHEET NO.	
					DRAFT WHERE APPLICABLE MUST REMAIN WITHIN DIMENSIONS	SEE CHART				1 OF 2	
						THIS DRAWING CONTAINS INFORMATION THAT IS PROPRIETARY TO MOLEX INCORPORATED AND SHOULD NOT BE USED WITHOUT WRITTEN PERMISSION					



CIRCUIT SIZE LAYOUT (SCALE : 2-1)

V-2 BLACK		
		24
		22
		20
		18
		16
		14
		12
		10
		8
39-02-8065	5569-06P-BL	6
39-02-8045	5569-04P-BL	4
EDP NO.	ENG. NO.	CIRCUIT

V-2 BLUE		
		24
		22
		20
		18
		16
		14
		12
		10
		8
39-02-8046	5569-04P-BU	4
EDP NO.	ENG. NO.	CIRCUIT

V-2 RED			V-0 NATURAL			V-2 NATURAL		
		24	39-01-2246	5559-24P-210	24	39-01-2241	5559-24P	24
		22	↑ -2226	-22P-210	22	↑ -2221	-22P	22
		20	↑ -2206	-20P-210	20	↑ -2201	-20P	20
		18	↑ -2186	-18P-210	18	↑ -2181	-18P	18
		16	↑ -2166	-16P-210	16	↑ -2161	-16P	16
		14	↑ -2146	-14P-210	14	↑ -2141	-14P	14
		12	↑ -2126	-12P-210	12	↑ -2121	-12P	12
		10	↑ -2106	-10P-210	10	↑ -2101	-10P	10
		8	↑ -2086	-08P-210	8	↑ -2081	-08P	8
		6	↑ -2066	-06P-210	6	↑ -2061	-06P	6
39-02-8047	5559-04P-RE	4	↓ -2046	-04P-210	4	↓ -2041	-04P	4
EDP NO.	ENG. NO.	CIRCUIT	EDP NO.	ENG. NO.	CIRCUIT	EDP NO.	ENG. NO.	CIRCUIT

SEE SHEET 1 EC NO: UCP2010-0850 DRWN: JAGUILAR 2009/11/09 CHKD: J.BELL 2009/11/10 APPR: F.S.MITH 2009/11/10	QUALITY SYMBOLS ▽=0 ▽=0 ▽=0	GENERAL TOLERANCES (UNLESS SPECIFIED)		DIMENSION STYLE MM/IN		SCALE 2:1		DESIGN UNITS METRIC		THIRD ANGLE PROJECTION					
		DRAWN BY H. HIRAMOTO		DATE 1988/10/14		TITLE NEW MINI. FIT CONNECTOR CRIMP PIN HOUSING		MOLEX INCORPORATED		SD-5559-NP					
		CHECKED BY Y. YAMADA		DATE 1988/10/21											
		APPROVED BY M. ENOMOTO		DATE 1988/10/24		DOCUMENT NO.									
		MATERIAL NO.		SIZE C		THIS DRAWING CONTAINS INFORMATION THAT IS PROPRIETARY TO MOLEX INCORPORATED AND SHOULD NOT BE USED WITHOUT WRITTEN PERMISSION		SHEET NO. 2 OF 2							