

PLEASE CHECK WWW.MOLEX.COM FOR LATEST PART INFORMATION

Part Number:

0038002117

Status:

Active

Overview:

kk

Description:

2.54mm (.100") KK® IDT Double Cantilever Contact, 27 Circuits, Tin (Sn), Feed-Through, Friction Ramp and Polarizing Rib, Brown ID Strip

Documents:

3D Model

Drawing (PDF)

Product Specification PSX-7690S (PDF)

RoHS Certificate of Compliance (PDF)

Agency Certification

CSA

LR19980

General

Product Family

Series

Comments

Crimp Quality Equipment

Overview

Product Name

IDT and Solder Connectors

7720

Version J

Yes

kk

KK®

Physical

Circuits (Loaded)

Circuits (maximum)

Color - Resin

Durability (mating cycles max)

Flammability

Gender

Glow-Wire Compliant

Lock to Mating Part

Material - Metal

Material - Plating Mating

Material - Plating Termination

Material - Resin

Number of Rows

Packaging Type

Pitch - Mating Interface (in)

Pitch - Mating Interface (mm)

Pitch - Term. Interface (in)

Pitch - Term. Interface (mm)

Polarized to Mating Part

Stackable

Temperature Range - Operating

Termination Interface: Style

Wire Size AWG

27

27

Natural

5

94V-2

Female

No

None

Brass

Tin

Tin

Nylon

1

Bag

0.100 In

2.54 mm

0.100 In

2.54 mm

Yes

No

0°C to +75°C

IDT or Pierce

26 Stranded, 28 Solid, 28 Stranded Topcoat

Electrical

Current - Maximum per Contact

Voltage - Maximum

4A

250V

Material Info

Old Part Number

7720S-C27J

Reference - Drawing Numbers

Packaging Specification

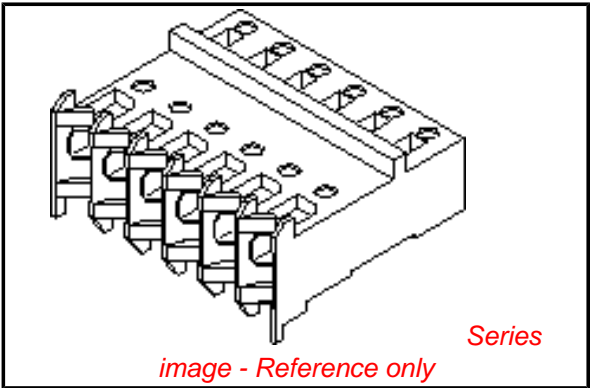
Product Specification

Sales Drawing

PK-7720-100

PSX-7690S

SDA-7720S-*N*



EU RoHS

ELV and RoHS

Compliant

REACH SVHC

Not Reviewed

Halogen-Free

Status

China RoHS



Need more information on product environmental compliance?

Email productcompliance@molex.com
For a multiple part number RoHS Certificate of Compliance, [click here](#)

Please visit the [Contact Us](#) section for any non-product compliance questions.

Search Parts in this Series

7720Series

Application Tooling | FAQ

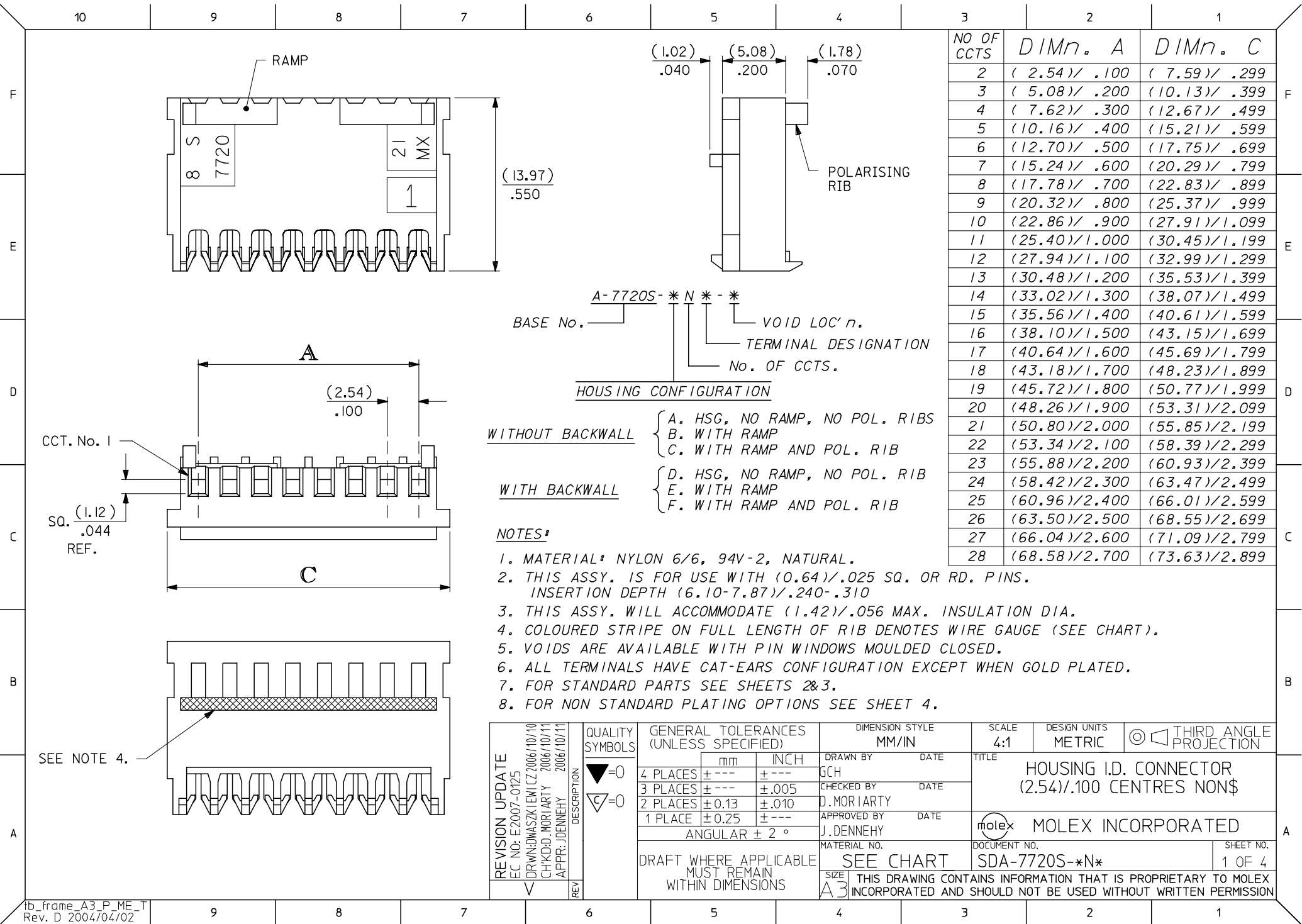
Tooling specifications and manuals are found by selecting the products below. Crimp Height Specifications are then contained in the Application Tooling Specification document.

Global

Description	Product #
Insertion Tool for	0638133504
2.54mm (.100") Pitch	
KK® IDT Crimp	
Terminals	
IDT - Semi-automatic	0011200412
- Bench-Top	
Terminator	

This document was generated on 05/19/2010

PLEASE CHECK WWW.MOLEX.COM FOR LATEST PART INFORMATION



[illegible]